

FLEX SERIES -02W

CIGS Flexible Modules: High Power Density in a Flexible Form Factor

KEY FEATURES

- ▶ Record efficiency levels in a flexible form factor
- ▶ Low installed weight at less than 3.0kg/m²
- ▶ No penetrations, ballast or racking required
- ▶ Applicable for high wind load and high seismic hazard areas
- ▶ Bypass diodes reduce PV system shading losses



BELIABILITY AND SAFETY

- ▶ IEC 61646 & IEC 61730
- ▶ UL 1703

WARRANTY

- ▶ 5 year workmanship
- ▶ 5/10/25 year warranty against power loss

FLEX-02W SERIES CIGS MODULE

ELECTRICAL PERFORMANCE AT STC¹

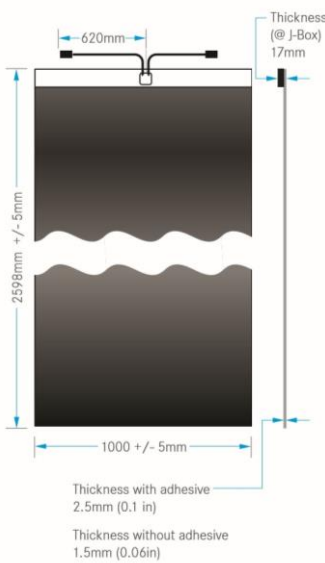
Nominal Power	P_{MPP}	[W]	340	350	360	370	380
Aperture Efficiency	η	[%]	14.8%	15.3%	15.7%	16.1%	16.5%
Power Output Tolerance		[W]	+10/-0	+10/-0	+10/-0	+10/-0	+10/-0
Maximum Power Voltage	V_{MPP}	[V]	29.3	29.9	30.4	31.0	31.5
Maximum Power Current	I_{MPP}	[A]	11.61	11.72	11.83	11.94	12.06
Open Circuit Voltage	V_{OC}	[V]	37.5	37.9	38.3	38.6	39.0
Short Circuit Current	I_{SC}	[A]	13.54	13.55	13.56	13.57	13.58
Maximum Series Fuse Rating		[A]	25				
Maximum System Voltage (IEC/UL)		[V]	1000/600				

¹Standard Test Conditions (STC):1000W/m²,25°C Cell temperature, AM 1.5 spectrum

THERMAL CHARACTERISTICS

NOCT	[°C]	48
Temperature Coefficient of P_{MPP}	[%/°C]	-0.38
Temperature Coefficient of V_{OC}	[%/°C]	-0.28
Temperature Coefficient of I_{SC}	[%/°C]	0.008

PHYSICAL AND MECHANICAL SPECIFICATIONS



Length	2598mm
Width	1000mm
Thickness, Maximum at J-Box*	17mm
Weight(Module without adhesive)	5.1kg
Weight(Module with adhesive)	6.2kg
Weight/Area(Module without adhesive)	1.96kg/m ²
Weight/Area(Module with adhesive)	2.39kg/m ²
Junction Box Type	IP68
Cable connections	MC4 Compatible
Cell type	Copper Indium Gallium Diselenide (CIGS)
Warranty**	5 year workmanship; 5/10/25 year power output
Certifications	UL 1703, IEC 61646, IEC 61730

*2.5mm for the rest of the module with adhesive

*1.5mm for the rest of the module without adhesive

**Please see full warranty for details

主要特点

- 创纪录的柔性电池转换效率
- 小于3.0kg/m²的单位安装重量
- 安装时无需额外穿孔、压载、支撑
- 适用于高风压和地震高发地区
- 嵌入式旁路二极管串的设计减少遮荫效应的影响

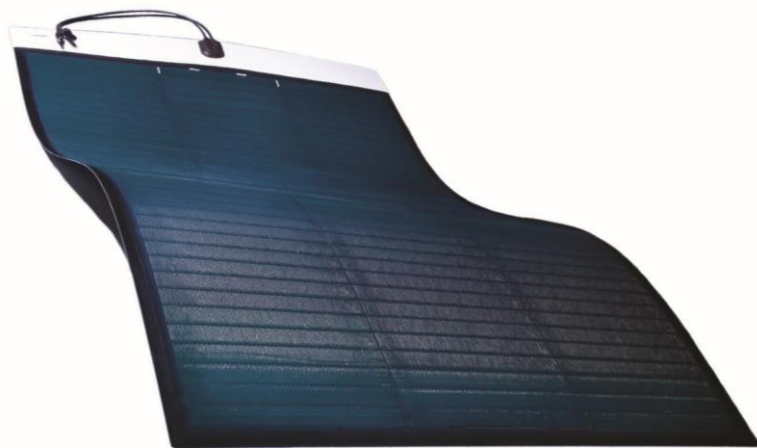


可靠性和安全性

- IEC 61646 & IEC 61730
- UL 1703

质量保证

- 5年产品质保
- 5年/10年/25年峰值功率有限保证



柔性 02W 系列 CIGS 组件

标准测试条件下的电学性能

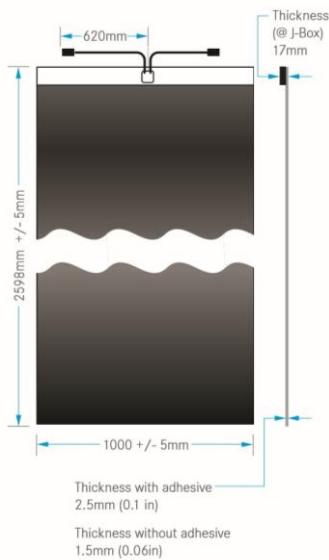
峰值功率	P_{MPP}	[W]	340	350	360	370	380
转化效率	η	[%]	14.8%	15.3%	15.7%	16.1%	16.6%
功率公差		[W]	+10/-0	+10/-0	+10/-0	+10/-0	+10/-0
峰值电压	V_{MPP}	[V]	29.3	29.9	30.4	31.0	31.5
峰值电流	I_{MPP}	[A]	11.61	11.72	11.83	11.94	12.06
开路电压	V_{OC}	[V]	37.5	37.9	38.3	38.6	39.0
短路电流	I_{SC}	[A]	13.54	13.55	13.56	13.57	13.58
最大保险丝额定电流		[A]	25				
最大系统电压	(IEC/UL)	[V]	1000/600				

¹ 标准测试条件(STC):1000W/m²,25°C 电池温度, AM 1.5 光谱

热性能

电池标称工作温度	[°C]	48
峰值功率的温度系数	[%/°C]	-0.38
开路电压的温度系数	[%/°C]	-0.28
短路电流的温度系数	[%/°C]	0.008

物理机械性能



长度	2598mm
宽度	1000mm
厚度 (含接线盒) *	17mm
组件重量 (不含粘贴胶)	5.1kg
组件重量 (含粘贴胶)	6.2kg
组件重量/组件面积(不含粘贴胶)	1.96kg/m ²
组件重量/组件面积(含粘贴胶)	2.39kg/m ²
接线盒类型	IP68
输出端子类型	MC4 兼容
电池类型	铜铟镓硒(CIGS)
质量保证**	5年产品质保; 5年/10年/25年峰值功率有限保证
组件认证	UL 1703, IEC 61646, IEC 61730

*2.5mm 是组件和粘贴胶的厚度

*1.5mm 是组件的厚度

**请阅读质保条款